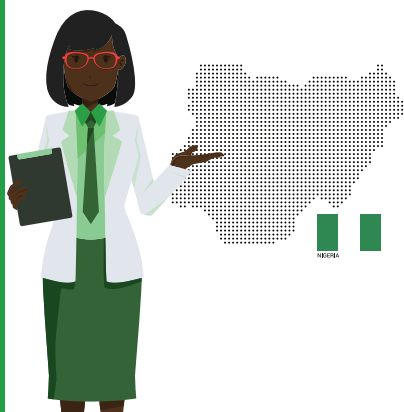
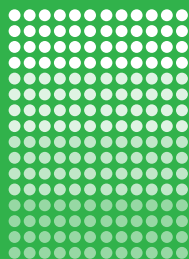




JANUARY 2022

# NEWSLETTER



The Nigeria National Accreditation System (NiNAS) is Nigeria's national accreditation body recognised internationally to accredit conformity assessment bodies (CABs) such as laboratories (testing, medical testing and calibration), inspection bodies and certification bodies, in accordance with the relevant ISO (International Organisation for Standardisation) series of standards and guides.

## CONFORMITY ASSESSMENT, ITS NECESSITY IN NIGERIA

The operation of an effective and credible quality infrastructure (QI) is necessary for countries to fully engage in international trade. QI helps transform countries into a modern economy, stimulate growth and create incentives for the economy, all of which Nigeria needs.

For QI to function properly it must properly utilize the advantages of conformity assessment – which is a third-party attestation of competence to quality and international standards, what this does is to provide confidence to the international community and to consumers that goods, services and processes maintain an acceptable standard everywhere.

Customers and international communities gain much-needed confidence in the integrity of products, services, and processes from conformity assessment. This helps maintain a healthy and ecologically friendly status both locally and internationally which fosters business growth and facilitates its excellence.

Furthermore, the world trade organization WTO booklet “WTO agreement series – technical barriers to trade (TBT) prepared to assist public understanding of the TBT agreement” states:

*“One significant challenge that many developing countries face is in the area of conformity assessment. To effectively implement the TBT agreement, access to conformity assessment infrastructure – sometimes referred to as “technical infrastructure” or “quality infrastructure” – is essential. This includes for example access to bodies (whether national or regional) that have competence in the area of metrology, testing, certification and accreditation which may be recognized internationally.”*

A detailed insight on the effect of poor conformity assessment in trade nationally can be seen in the rejection of Nigerian produced foodstuffs like beans, nutmeg and others back in 2014 (*Beans, snails, nutmeg and 39 other food exports rejected by the UK Nairametries – march 26, 2015*

Some examples of standards for conformity assessment include.

- ❖ ISO 15189 – general requirements for competency in medical laboratories.
- ❖ ISO 17024 – general requirements for bodies operating certification of persons.
- ❖ ISO 17021 – general requirements for bodies operating certification of management systems.
- ❖ ISO 17065 – general requirements for bodies operating certification of products and services.
- ❖ ISO 17020 – general requirements for inspection bodies.



### OUR JOURNEY SO FAR

Seven years ago, NiNAS was a new project, a part of the National Quality Infrastructure Project (NQIP) for Nigeria, provided by United Nations Industrial Development Organization (UNIDO). The NQIP was aimed at supporting the missing standards and quality control bodies, which Nigeria needs in order to improve the quality of goods and services exchanged in both the national and international markets. As part of the project, NiNAS was charged with the role of providing cost effective accreditation services that are easily accessible by organizations operating both in Nigeria and in the West Africa region. It was not the smoothest of rides due to the lack of public knowledge on accreditation and the perceived high cost. At the early stage of the NQIP project, series of Conformity Assessment Bodies in ISO/IEC 17025 were sponsored to achieve accreditation, this provided huge support for the project and created an avenue for both direct and indirect sensitization through implementation of accreditation across laboratories in Nigeria: Lagos, Kaduna, Ogun, Port Harcourt etc.

In 2019, 4 years after NiNAS was incorporated, thanks to the ongoing sensitization, NiNAS was able to accredit more than 26 testing and calibration laboratories including a laboratory outside the shores of Nigeria: Republic of Niger. This records as a huge achievement considering the perceived challenge, however, the need to not only expand our tentacles to more Labs arose but also the need to expand our scopes to satisfy our mandate.

Today, we have increased our scope from ISO/IEC 17025:2017 - general requirements for the competence, impartiality and consistent operation of laboratories; to 8 various programs. We have also carried out over 100 trainings, 90 assessments/reassessments and successfully accredited 38 conformity assessment bodies across various standards and scopes



The various accreditation programs and standards we offer currently are:

- ❖ ISO/IEC 17020 - Conformity assessment: Requirements for the operation of various types of bodies performing inspection
- ❖ ISO/IEC 17021 - Conformity assessment: Requirements for bodies providing audit and certification of management
- ❖ ISO/IEC 17024 - Conformity assessment: General requirements for bodies operating certification of persons
- ❖ ISO/IEC 17025 - General requirements for the competence of testing and calibration laboratories
- ❖ ISO/IEC 17065 - Conformity assessment: Requirements for bodies certifying products, processes and services
- ❖ ISO 15189 - Conformity assessment: Specifies Requirements for quality and competence in medical laboratories
- ❖ ISO/IEC 17043 - Conformity assessment: Proficiency testing
- ❖ ISO 17034 - General requirements for reference materials producers

We believe that more needs to be done to satisfy our mandate and boost national/international confidence in laboratory results, inspection reports, certifications and other Conformity Assessment Services provided by Nigerian Conformity Assessment Bodies (CABs) or other CABs accredited by Nigeria.



### ACCREDITED CONFORMITY ASSESSMENT BODIES (CABs)

Testing & Calibration Bodies ISO/IEC 17025	-17
Medical Testing Bodies ISO 15189	-03
Certification Bodies ISO/IEC 17021	-01
Inspection Bodies ISO/IEC 17020	-01

Scan QR code to view  
Accredited CABs



## NiNAS TRAINING COURSE SCHEDULE: JANUARY - DECEMBER, 2022

Training Programme	ABUJA	LAGOS	PORT HARCOURT	Course Fee
<b>ISO/IEC 17025:2017</b>  <b>Basic awareness and implementation in the laboratory</b>	4 – 7 April, 2022	2-5 August 2022	29-30 November, 2022	N180,000
<b>ISO 15189</b>  <b>Awareness training, implementation and laboratory management</b>	29-31 March, 2022	11-13 July, 2022	26-28 October, 2022	N180,000
<b>ISO/IEC 17021-1:2018</b>  <b>Awareness and Implementation</b>	11-13 April, 2022	8-10 August, 2022	2-4 November, 2022	N180,000
<b>ISO/IEC 17020</b>  <b>Awareness and Implementation</b>	2-4 March, 2022	4-6 July, 2022	3-5 October, 2022	N180,000
<b>ISO/IEC 9001</b>  <b>AWARENESS &amp; IMPLEMENTATION</b>	3-5 May 2022	2-4 June 2022	5-7 December 2022	N180,000

## NOTE

### ATTENDANCE PRE-REQUISITES AND ARRANGEMENTS

Awareness training course on ISO/IEC 17025 is a pre-requisite for those intending to attend the laboratory management and assessment techniques.

Please note the following:

- ❖ Training courses can only be confirmed to go ahead if the minimum number of participants registered has been recorded 14 days prior to the scheduled dates of training;
- ❖ Course fees cover training materials, lectures and refreshment (tea and lunch);
- ❖ Cancellations made less than 10 working days prior to the commencement of the training are subject to a 50% cancellation fee;
- ❖ No reimbursement for cancellations made less than 3 working days prior to the training;
- ❖ Substitute delegates are acceptable;
- ❖ Starting time for each course is 09:00 each day;
- ❖ The venue of the course will be confirmed one week prior to the training date.

For further information including quotation/invoice for in-house and customised training courses, please contact:

*Rosemary* - +234 806 849 1338

*Celestine* - +234 810 222 1199

### REFUND POLICY

When it is not possible to hold a scheduled training course on the announced date, and NiNAS has no plans of rescheduling such a course any time soon, participants will be refunded with 100% of the fees paid.

This training schedule does not include courses provided to organizations at their request. This training schedule covers courses open to the public.