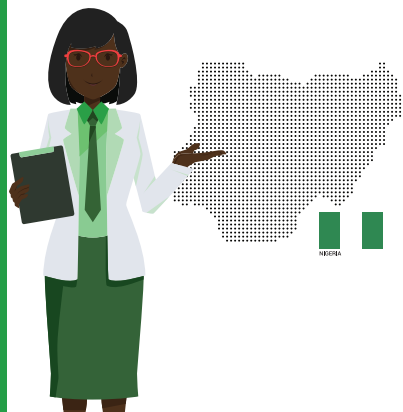




FEBRUARY 2022

NEWSLETTER

The Nigeria National Accreditation System (NiNAS) is Nigeria's national accreditation body recognised internationally to accredit conformity assessment bodies (CABs) such as laboratories (testing, medical testing and calibration), inspection bodies and certification bodies, in accordance with the relevant ISO (International Organisation for Standardisation) series of standards and guides.



REALISING THE SAYING "TESTED ONCE ACCEPTED GLOBALLY"

A conducive infrastructure that assures the quality of products and services is a critical enabler for firms to access and compete in domestic and foreign markets, therefore broadening their trade and investment opportunities and boosting their productivity and innovation. A modern quality infrastructure serves the needs of governments, businesses and consumers – Andrei Mikhnev, world bank group, Nov, 13 2018.

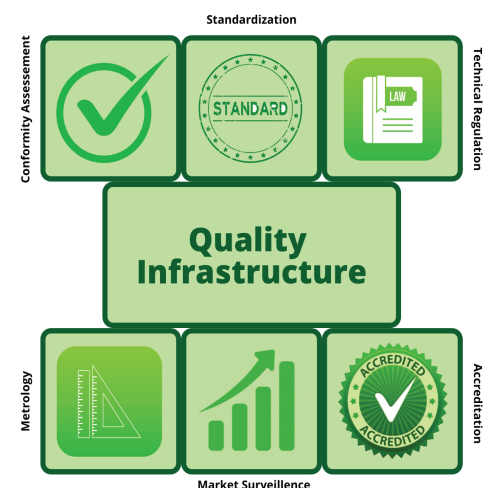
Our current economic system in Nigeria today, is experiencing so many difficulties and a dormancy with bolstering international trade and facilitating economic growth, this is hugely caused by our inefficient quality infrastructure. Nigeria as a country is at a stage where becoming a modern economy, can only be fostered by having an infrastructure suitable to carry this huge economy on its back, without having cracks or slowing steps.

At a point before dependency on oil became a normalcy, Nigeria had been trading so many other agricultural and industrial relevant products such as rubber, groundnuts and hide, cocoa, palm oils and more. Today, with the current government's mandate to diversify the economy, products that were traded before the discovery of oil in 1956 has sparked a lot of interest.

However, our current infrastructure could find it challenging to support this new mandate. For one, crude oil is unrefined (unconsumable), so stringent quality systems were not needed to engage in export with countries, but agricultural products are different, they are consumable, and anything consumable needs to meet appropriate statutory and regulatory requirements set by countries, in order to protect lives and properties.

For a country to engage in trade with another country, it has to prove that its products are safe and environmentally friendly. The UN's technical barriers to trade see to it that certain barriers make sure only quality products gets traded, thus promote healthy competitiveness in the global markets. So how does Nigeria leverage herself to compete internationally? By simply re-engineering her quality infrastructure to suit the current needs.

The good news is, Nigeria has already taken that first step by approving the quality policy and on the 7th of March, she would take the second step; the inauguration of the National Quality Council. However, it is key that Nigeria completes the process of fully implementing a proper quality infrastructure, creating awareness across private organizations, MDAs and citizens on the benefits of the quality policy and the roadmap to its implementation. The proper implementation of this policy is a giant leap towards realizing "tested once, accepted globally"; positioning the nation to properly engage in international trade and compete fairly across all borders.



REASON WHY NIGERIAN LABORATORIES NEEDS TO BE ACCREDITED

So many lives have been lost to wrong medication and inaccurate test results, due to the use of poor or non-calibrated equipment. Unfortunately, most Nigerian health care consumers are ignorant of calibration and the dangers it poses when not properly done.

One of the key benefits of accreditation to laboratories, is the minimization of measurement uncertainty by ensuring the accuracy of test equipment. Without calibration, test equipment can fall out of the OEM's specifications and provide inaccurate values; threatening quality of results, safety of laboratory consumers and equipment longevity.

Accreditation is an efficient and effective way to assure the reliability of test results generated from a medical, testing or calibration laboratory, nationally and internationally. To check accredited laboratories, you can visit our web page dedicated to accredited laboratories: <http://ninas.ng/accreditation/accredited-labs-2/>.

ISO/IEC 17025 and ISO 15189 are standards that serve as the competency requirement for accrediting testing/calibration laboratories and medical laboratories respectively. Before a laboratory is accredited, the laboratory shall be evaluated by an independent third party (an accreditation body) against the required international standard. The laboratory must be able to formally demonstrate its impartiality and competency to conduct specific tests in scopes they require accreditation on.

BENEFITS OF AN ACCREDITED LABORATORY

Everyone benefits from accreditation: consumers, manufacturers, patients and laboratories.

- ❖ International recognition of the laboratory's competence: This is where the accreditation body's signatories to the ILAC MRA becomes apparent. The aim of ILAC MRA is 'tested once, accepted everywhere'.
- ❖ Boosts the confidence of consumers in accepting the reliability of a laboratories' test results.
- ❖ Continuous improvement of laboratories (medical, testing and calibration) to maintain competency: An accreditation body is required to re-assess an accredited laboratory annually or bi-annually to ensure continual improvements of the laboratory's operations.
- ❖ Government regulators and businesses that use laboratory test results can be confident that the results they receive from an accredited laboratory are reliable. Also attests that the laboratory is technically competent to conduct the testing.
- ❖ Access to more customers: Many government bodies require test results submitted to them to be generated in an accredited laboratory, this restricts such opportunities to only accredited laboratories.

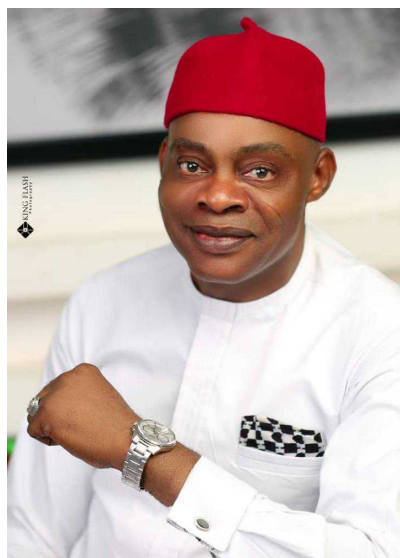
Since 2015, till date, NiNAS has continued to ensure the impartiality and competency of medical, testing and calibration laboratories.

RE-ELECTION OF NINAS' DG AS THE CHAIRPERSON OF PAN-AFRICAN QUALITY INFRASTRUCTURE

The Director General of Nigeria National Accreditation System (NiNAS): Celestine O. Okanya was re-elected as the Chairperson of Pan African Quality Infrastructure (PAQI).

The election took place at the just concluded PAQI Joint Committee Meeting held at Hilton Hotel Nairobi, Kenya, from February 24th to February 25th, 2022.

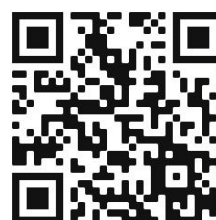
By this re-election, NiNAS' DG will pilot the affairs of this continental body on Quality infrastructure till 2024. PAQI is a forum for Africa's continental quality institutions for standardisation, accreditation, and metrology represented by ARSO & AFSEC, AFRAC, and AFRIMET respectively.



ACCREDITED CONFORMITY ASSESSMENT BODIES (CABs)

Testing & Calibration Bodies ISO/IEC 17025	-17
Medical Testing Bodies ISO 15189	-03
Certification Bodies ISO/IEC 17021	-01
Inspection Bodies ISO/IEC 17020	-01

Scan QR code to view
Accredited CABs



NiNAS TRAINING COURSE SCHEDULE: JANUARY - DECEMBER, 2022

Training Programme	ABUJA	LAGOS	PORT HARCOURT	Course Fee
ISO/IEC 17025:2017 Basic awareness and implementation in the laboratory	4 – 7 April, 2022	2-5 August 2022	29-30 November, 2022	N 180,000
ISO 15189 Awareness training, implementation and laboratory management	29-31 March, 2022	11-13 July, 2022	26-28 October, 2022	N180,000
ISO/IEC 17021 -1:2018 Awareness and Implementation	11-13 April, 2022	8-10 August, 2022	2-4 November, 2022	N 180,000
ISO/IEC 17020 Awareness and Implementation	2-4 March, 2022	4-6 July, 2022	3-5 October, 2022	N180,000
ISO/IEC 9001 AWARENESS & IMPLEMENTATION	3-5 May 2022	2-4 June 2022	5-7 December 2022	N180,000

NOTE

ATTENDANCE PRE-REQUISITES AND ARRANGEMENTS

Awareness training course on ISO/IEC 17025 is a pre-requisite for those intending to attend the laboratory management and assessment techniques.

Please note the following:

- ❖ Training courses can only be confirmed to go ahead if the minimum number of participants registered has been recorded 14 days prior to the scheduled dates of training; Course fees cover training materials, lectures and refreshment (tea and lunch);
- ❖ Cancellations made less than 10 working days prior to the commencement of the training are subject to a 50% cancellation fee; No reimbursement for cancellations made less than 3 working days prior to the training; Substitute delegates are acceptable;
- ❖ Starting time for each course is 09:00 each day;
- ❖ The venue of the course will be confirmed one week prior to the training date.

For further information including quotation/invoice for in-house and customised training courses, please contact:

Rosemary - +234 806 849 1338

Celestine - +234 810 222 1199

REFUND POLICY

When it is not possible to hold a scheduled training course on the announced date, and NiNAS has no plans of rescheduling such a course any time soon, participants will be refunded with 100% of the fees paid.

This training schedule does not include courses provided to organizations at their request. This training schedule covers courses open to the public.

